



# Charming Villages of Vermont

Bennington - Stowe - Rutland



September 30 - October 12, 2018 (13 days)

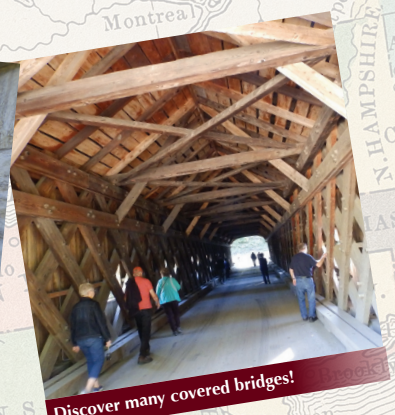
## HIGHLIGHTS



- \* Fall Colors - Impossible to Describe!
- \* A True Back Roads Experience
- \* Exquisite Dining in Classic Vermont Inns
- \* Covered Bridges & Museums
- \* Hildene Lincoln Family Home
- \* Bennington Pottery
- \* The Sugar Shack Featuring Norman Rockwell
- \* Bennington Museum
- \* The Grandma Moses Gallery
- \* Village of Weston & The Vermont Country Store
- \* Simon Pearce Glass
- \* President Coolidge Historic Village
- \* Billings Farm Museum
- \* Quechee Gorge
- \* King Arthur Flour
- \* Farm Way
- \* Goodrich's Maple Farm



Bennington Battle Monument



Discover many covered bridges!

- \* Rock of Ages Tour
- \* Montpelier & State Capitol
- \* Ben & Jerry's Ice Cream Tour
- \* Cold Hollow Cider Mill
- \* Trapp Family Lodge outside Stowe, VT
- \* Lake Champlain Luncheon Cruise
- \* Shelburne Museum
- \* Fire & Ice Restaurant
- \* Corning Museum of Glass
- \* JayCo RV Plant Tour

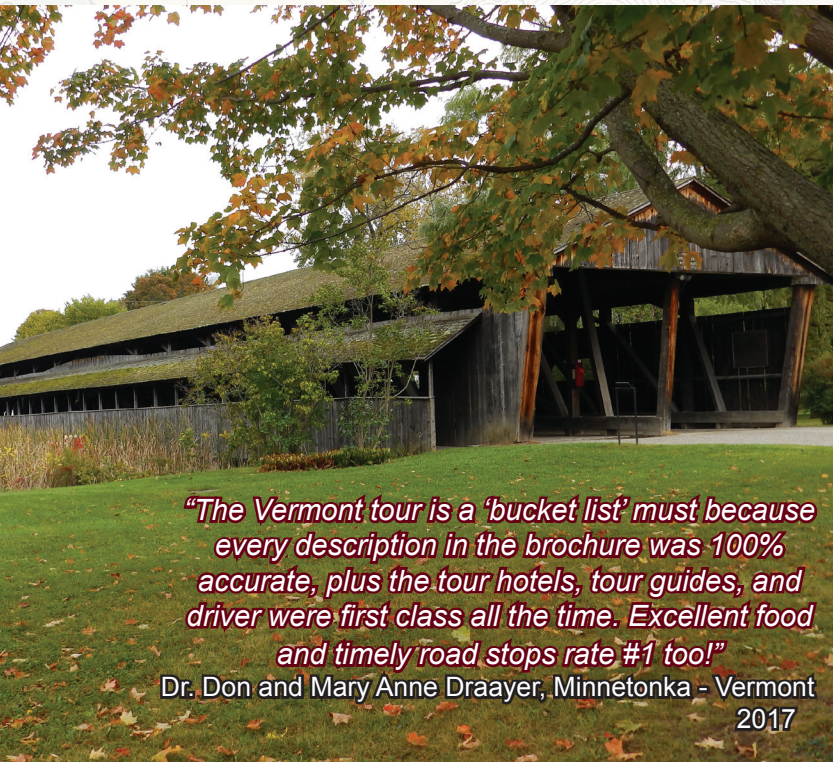




"The Vermont trip to see the fall color leaves was fantastic. Mountain after mountain displays of reds, yellows, purples, etc. leaves provided a week of scenic beauty. On top of that we were privileged to meet many new friends plus staying at the Trapp Inn.

**A PICTURE PERFECT TOUR!!"**

Carol & Roger, Plymouth MN



*"The Vermont tour is a 'bucket list' must because every description in the brochure was 100% accurate, plus the tour hotels, tour guides, and driver were first class all the time. Excellent food and timely road stops rate #1 too!"*

Dr. Don and Mary Anne Draayer, Minnetonka - Vermont 2017

Covered Bridges bring history to life!

## **THIS R&J TOUR IS AN ULTIMATE AUTUMN EXPERIENCE.**

"If you can pick and choose, there is no better time for a motor trip through Vermont than in autumn," Abner W. Coleman wrote in the very first issue of Vermont Life published in 1946.

Coleman continues to say, "Vermont during the autumn months offers delights indescribable."

**This is the absolute prime time to journey through the Green Mountain State with R&J Tours! Vermont is a unique and special place, especially along the back roads, in the villages and small hamlets where quality of life and being a good neighbor is a priority. It is a place of mystical mountains, rolling hills, green valleys, picturesque farms, scenic rivers and color. The autumn woods run the entire color spectrum from the blazing reds of the maples, the yellows of birch and beech to the violets of the ever present mountain backgrounds. But it's the Charming Villages that bring it all together and give life and character to a time and era we all so fondly remember.**

*Join us as we explore the  
**CHARMING VILLAGES OF VERMONT!***

### **Day 1 - Home to Lansing, IL**

A travel day thru beautiful Wisconsin to Lansing, IL will begin our adventure to the charming villages of Vermont. Coffee & lunch breaks are planned along the way. Dinner will be on your own.

**Hotel: Holiday Inn Express**

### **Day 2 - Lansing to Erie, PA**

Travel day across Indiana & Ohio today where the scenery & color begin to intensify east of Cleveland as we journey along Lake Erie into NW Pennsylvania. Coffee & lunch breaks will be enjoyed at convenient Turnpike Travel Plazas. Dinner will be on your own.

**Included Meals: Breakfast**

**Hotel: Holiday Inn Express**

### **Day 3 - Erie to Bennington, VT**

Today we will travel across southern New York. This section of freeway will be a colorful introduction to the days ahead. Our entry into Vermont and the Village of Bennington is a pleasant preview of what is in store. Our "Welcome to Vermont" dinner will be served up special for you tonight!

**Included Meals: Breakfast, Dinner**

**Hotel: Hampton Inn (2 Nights)**

### **Day 4 - Bennington**

After breakfast at our lovely hotel, we have a fitting start to our adventure at the Vermont Covered Bridge Museum. Then traveling back through the streets of Bennington to the Historic Bennington Pottery for a guided tour. A beautiful Vermont drive takes us to Manchester, a summer resort area since the Civil War and we'll see why when the world famous Equinox Resort comes in view. Next is a very privileged visit to Hildene, the Lincoln family home of Robert Todd Lincoln, son of Abe Lincoln. This ancestral home sits on a promontory with breathtaking views of the Vermont landscape. Here we enjoy an included light lunch with our hosts. Taking the back roads we journey to the Sugar Shack in Arlington, which features the setting and personalities for most of Norman Rockwell's classic Saturday Evening Post art.

**Included Meals: Breakfast, Lunch, Dinner**

**Villages: Bennington, Manchester Depot, Manchester, Arlington & North Bennington**

### **Day 5 - Bennington to West Lebanon, NH**

Breakfast at our hotel begins another day in autumn paradise. Before leaving Bennington, we visit the incredible Bennington Museum where we experience a definite highlight of the trip, the Grandma Moses Gallery! Next we travel beautiful backroads highways through the Green Mountains and picturesque Vermont villages to the Stratton Mountain Ski Lodge for lunch before you board the Gondola which will take you to the top of southern Vermont's highest peak for a breathtaking view of the surrounding fall landscape. Then we will be on our way to Weston, a mountain crossroads village that embodies all we envision when we think "Villages of Vermont." Weston is home to the world renowned Vermont Country Store, Vermont's number one nostalgia outlet. The oval common is shaded with majestic maples that surround the village bandstand. Don't miss the old mill on the bubbling mountain stream that runs through town. Next comes Chester, "hometown Vermont." Dinner is at the Fullerton Inn: Offering classic Vermont hospitality dating back to the 1860's.

**Included Meals: Breakfast, Lunch, Dinner**

**Villages: Bondville, Peru, Londonderry, Weston & Chester**

**Hotel: Fireside Inn & Suites (2 Nights)**

### **Day 6 - West Lebanon**

Viewing a map of Vermont, distances look formidable until we realize that it's really not very far from place to place. We'll travel only 61



about 80 miles today with so much to see and do. Down the road we go and our first stop is to view the spectacular Quechee Gorge. You will look down 163 feet to the cascading waters of the Ottauquechee River framed in stunning fall color. Just down the road and across the Quechee River is the Simon Pearce Glass Gallery. You'll have time to browse the shops viewing the magnificent glass pieces. In the lower level you will have an opportunity to watch the glass blowers making their glass treasures...it's an amazing display of skill! A little later you will enjoy a delightful lunch in the restaurant right here at Simon Pearce! Then some relaxful time is given to enjoy the Billings Farm Museum, a "Gateway to Vermont's Rural Heritage." A little further down the road is Plymouth Notch and the birthplace of President Calvin Coolidge. This historic village, a National Historic Landmark, is virtually unchanged from the early 1900's and is a fascinating step back to a time gone by. The Florence Cilley General Store is a favorite of visitors. Back on the coach, we'll take a late afternoon drive that will take us past Echo Lake and the Village of Tyson. Ludlow, the ski capital of Vermont is next with its flag adorned bandstand in the little city square! Cavendish is a town just out of a movie set and just up the road is the Downers covered bridge...it's picture perfect! Soon back to our hotel for an included dinner and a good night's sleep after this amazing day!

**Included Meals: Breakfast, Lunch, Dinner**

**Villages: Windsor, Ascutney, Downers, Cavendish, Proctorsville, Ludlow, Tyson, Plymouth Union, Plymouth Notch, Bridgewater, Woodstock, Taftsville & Quechee**

**Hotel: Fireside Inn & Suites**

## Day 7 - West Lebanon to St. Johnsbury, VT

You may only want to have a lite buffet breakfast at the hotel this morning because our very first stop is King Arthur Flour & The Baker's Store in Norwich. Baking tools, ingredients and knowledge is the byline of this world-famous baking store. The bakery goods selection is irresistible and the coffee aroma compelling. When our appetites are satisfied, we depart on a scenic morning drive that takes us along the Connecticut River to Bradford, VT and a favorite stop for many traveling this area, The Farm Way store. Now prepare yourself; the backroads of Vermont this morning are a gem as we make our way to Cabot. Included lunch is at Sarah's Country Diner - It doesn't get any more "locally owned and operated" than this. Following lunch we make our way to Cabot Creamery, just a few steps away, for an opportunity to shop for their world-famous Vermont Cheese. Cabot Creamery is one of the most visited sites in all of Vermont. Just down the road is the Goodrich Maple Farm that's been in operation since 1840! We'll learn all about the Maple Syrup trade and have a chance to purchase some local syrup for the pancakes back home! Now on to St. Johnsbury, the heart of what Vermonter's proudly call The Northeast Kingdom. We settle in at the beautiful Comfort Suites of St. Johnsbury for the night.

**Included Meals: Breakfast, Lunch**

**Villages: Norwich, Thetford, Bradford, Cabot, Danville & St. Johnsbury**

**Hotel: Comfort Inn & Suites**

## Day 8 - St. Johnsbury to Stowe, VT

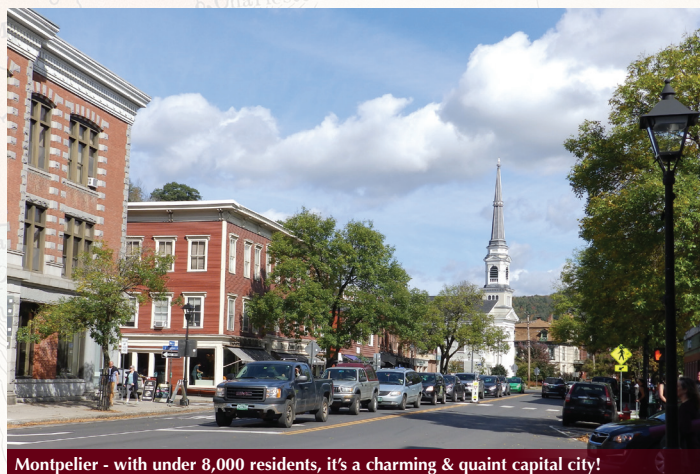
This morning our adventure takes us through the city of Barre to the Rock of Ages Quarry. Be amazed as you stand on the edge of a 600' deep granite quarry and hear the story of how this rock is mined. Next we visit Montpelier, with 8,000 residents, it is the smallest capitol city in America and the only one without a McDonalds. We'll make a stop in the heart of downtown for lunch on your own at one of the many sandwich shops and a chance to view the beautiful State Capitol Building before we journey on to Waterbury. This is no time to contemplate diets as we are stopping at Ben & Jerry's Ice Cream Factory for a tour and ice cream treats. But the best is



Quechee Gorge - impressive at 163' deep!



Tour Bennington Pottery - handmade in Vermont since 1948



Montpelier - with under 8,000 residents, it's a charming & quaint capital city!





Be amazed at the Sherburne Museum

still ahead as we make our way up a gentle winding mountain road to the Trapp Family Lodge. This gracious European styled mountain retreat is located at the original homestead of the von Trapp family. Famously chronicled in the musical "Sound of Music," the von Trapp Family has been welcoming guests here since 1938. Experience Vermont hospitality at its best at this dreamlike resort lodge overlooking the magical mountain landscape only Vermont and this location can offer. We dine this evening in the relaxed luxury & comfort of the lodge dining room overlooking the valley below. This evening view "The Real Maria" story in the lodge theatre while still having time to stroll the retreat pathways.

**Included Meals: Breakfast, Exquisite Dinner**

**Villages: Groton, West Groton, Orange, Websterville, South Barre, Montpelier, Waterbury & Stowe**

**Hotel: Trapp Family Lodge**

## Day 9 - Stowe to Rutland, VT

Watch the sunrise over the mountains this morning as you experience a "breakfast-of-a-lifetime" in the exquisite lodge dining room. Enjoy a relaxed morning in this incomparable setting before we continue our journey. This is another day of unsurpassed vistas as we travel through the Vermont countryside and wind our way down the mountainside through the classic village of Stowe. Stowe is the most famous and widely recognized village in all of Vermont. Stowe has it all: charming village streets, country stores, classic Victorian inns, and white spired churches. Just about every magazine and brochure you've ever seen on Vermont features this picturesque town. Just on up the road is Cold Hollow Cider Mill. Here is another wildly popular family road stop featuring fresh apples, Vermont cheese, their legendary cider donuts, and viewing their cider making. Then we're off to Burlington, Vermont's largest city and home to the University of Vermont. Burlington has an almost seaside feel. Here we board the Spirit of Ethan Allen III for a delightful luncheon cruise on beautiful Lake Champlain and experience the beauty of the mountain horizons. Next an amazing Vermont experience awaits us - Shelburne Museum - One of the nation's finest, most diverse, and unconventional museums of Americana. Thirty nine exhibition buildings set in a village on 45 very relaxing acres. Degas, quilts, tools, toys, gardens, Steamship Ticonderoga, covered bridges, and so much more. This promises to be an experience unlike you've ever had. This afternoon we travel more back roads south through Morgan horse country to Middlebury, another classic Vermont village. Just when you think there can't be any more unique dining experiences, we find the Fire & Ice Restaurant. This is not so much a restaurant as a dine-in museum with its stained glass and mahogany nooks, library, and 1921 Hackercraft Motor-



Beautiful Hildene - summer home of Robert Todd Lincoln

boat that serves as a salad bar! The unusual name was inspired by a Robert Frost poem. You will love this place! An evening drive in the Vermont countryside and into New York gets us to Lake George and our restful home this evening.

**Included Meals: Breakfast, Lunch, Dinner**

**Villages: Stowe, Burlington, Middlebury**

**Hotel: Hampton Inn**

## Day 10 - Rutland to Corning, NY

Enjoy breakfast as we contemplate our drive in the beautiful countryside of New York State. Soon we will be on Interstate Highways but you will continue to have the feel of a backroads tour as we will travel one of the most picturesque interstates in our country! After a lunch stop we will make our way to the Corning Museum of Glass! It's not just about Casserole dishes! This museum covers glass as though it were art and you will enjoy yourself as you make your way through the many displays and of course find some time to enjoy the gift shop! After checking into the hotel, have a relaxing included dinner.

**Included Meals: Breakfast, Dinner**

**Hotel: Radisson Hotel**

## Day 11 - Corning to Middlebury, IN

Today is a travel day but the view out your motorcoach window will be wonderful. The countryside in western New York State is beautiful as we travel over hill and around lake, past streams enjoying the fall beauty. We continue along Lake Erie as we make our way towards Cleveland and then on into the farm lands of Ohio and Indiana. We'll enjoy our time together and find a restful stop tonight in Middlebury, IN at the quaint Essenhaus Inn.

**Included Meals: Breakfast**

**Hotel: Essenhaus Inn**

## Day 12 - Middlebury to Rockford, IL

Morning breaks on another great Fall day! Our first stop is at the JayCo RV manufacturing plant where we will have the opportunity to see how beautiful 5th wheel RV's are constructed. You'll be



Incredible Simon Pearce Glass demonstration





Picturesque Old Mill - originally built in 1780 on the banks of the West River. After burning down in 1900, it was returned to its original configuration in 1936 & used as a grist mill.

amazed as you watch the construction from start to finish! Then why not take a look inside some of the finished products! Who knows... you may just have found your new winter retreat! We continue our travels west and through the heart of Amish Country and then enjoy the countryside as we skirt around Chicago and stop tonight in Rockford, IL. We'll enjoy a farewell dinner reminiscing about the great times we have had together!

**Included Meals: Breakfast, Dinner**

**Hotel: Holiday Inn Express**

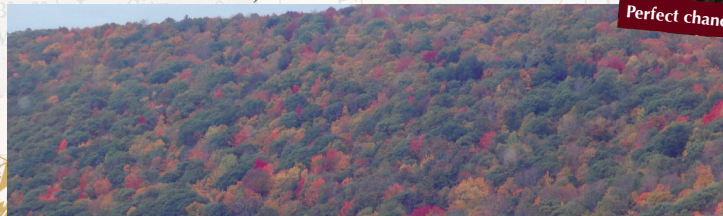
### Day 13 - Rockford to Home

Our journey concludes today as we motor across Wisconsin to our lovely home state of Minnesota. We'll enjoy one last meal together at the historic Piggy's Restaurant. Then a short drive will get us to the Twin Cities and home after a fabulous trip to Vermont in the Fall!

**Included Meals: Breakfast, Lunch**



Perfect chance for a little Christmas shopping!



Spectacular fall colors in Vermont



R&J greetings from the Trapp Family Lodge



Rock of Ages Quarry - complete with a granite bowling lane!



Robert Frost's cemetery

## 2018 DATES & PRICES



DATES:	Sept. 30 - Oct. 12, 2018 (13 Days)	
PRICE PER PERSON:	\$3,299 Double	\$4,399 Single
	\$2,989 Triple	\$2,789 Quad
PRICE INCLUDES:	26 Meals, Hotels & Activities as stated in brochure, Luxury Motorcoach	
DEPOSIT DUE PER PERSON:	\$100 p/p deposit at time of reservation, Full payment due 30 days prior to departure.	
OPTIONAL TRAVEL PROTECTION P/P:	\$205 Double (per person) / \$282 Single	
R&J TRAVEL BUCKS	\$45 Travel Bucks Earned with this Tour	
TOUR PACE:	Light to Moderate Walking	

1-800-758-6877 or [www.rjtoursonline.com](http://www.rjtoursonline.com)